

ThyssenKrupp-Reference

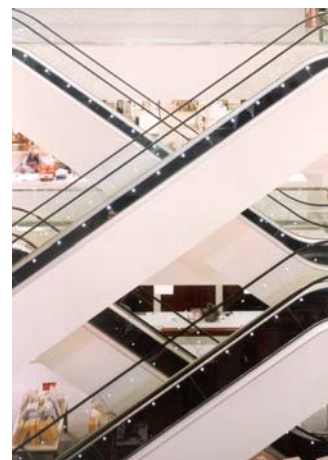
Vroom en Dressman

Project-Data

Location:	Netherland
Installation area:	Shopping Centre
Type:	4 x Velino FT 823
Rise:	4.30 m
Angle of inclination:	35°
Nominal width:	5 EK / 1000 mm
Special features:	Skirt band with halogen spots and black Smartsteps



Founded 1912 by Willem Vroom and Anton Dreesman under the name "Van alles, voor iedereen", with 69 department stores "Vroom en Dressman" is today the largest chain of department stores in the Netherlands.



ThyssenKrupp Fahrtreppen GmbH
P.O.Box 74 06 23
D-22096 Hamburg / Germany
Phone (+4940) 7 31 17-0
FAX (+4940) 7 31 17-211
E-Mail: marketing@tke-fahrtreppen-de.thyssenkrupp.com
www.thyssenkrupp-fahrtreppen.com

